

Al-Madinah Cultural Center

Al-Madinah Cultural Center

January 23, 2009

Fees Request for 2009-2010 Academic Year

217 Coffman Union 300 Washington Ave SE, Minneapolis, MN, 55455

Address

(612) 624-8922

madinah@tc.umn.edu

Phone

Fax

Email

“We acknowledge that the fees committee does not award actual dollars, but rather a penny fee that earns dollars based upon student enrollment levels. Any differences between anticipated and actual income resulting from changes in enrollment are the responsibility of the student organization, not of the fees committee.”

Sami Khwaja
Preparer’s Name Here

Nadia Huq
Co-Preparer’s Name Here

Is your organization an IRS 501 (c)(3) not-for-profit? Yes X No _____
If yes, please provide proof of your organization’s 501(c)(3) status *[please see attached]*.

Funds are being requested for (check all that apply):

General Operating Support X Start-Up Costs X Capital X
Project / Program Support X Technical Assistance _____ Other (List) _____

Budget

Dollar Amount Requested \$ 63,000
Total Annual Organization Budget \$ 73,390
Total Project Budget (Apart from General Operating) \$ 6,300 (Reserve)

Al-Madinah Cultural Center

Narrative

Background and History

Throughout its history, this nation has seen many influxes of immigrants. With these immigrants came Muslims from all regional and ethnic backgrounds. From Uzbekistan to Indonesia and from Morocco to China; Muslims from all over the world have found their homes and future in the United States of America. These Muslims share a unique culture promoted by their affiliation with their beliefs; a culture that in practice is not united anywhere but in this country. Regardless of the ethnicity or region individual Muslims defines themselves with, they always tend to locate other Muslims and find common bonds under the long established traditions of equality and brotherhood/sisterhood.

Muslims have been students and scholars at the University of Minnesota for over fifty years. While for many of these years, their presence was little known or felt, they soon started congregating and discovering their common bonds. A strong culture of campus Muslims emerged that focused on the above mentioned qualities of community and equality. The need for a gathering place where Muslims could strengthen their common bonds and discover their cultural roots had long been felt. Muslim students, a steadily increasing majority on campus, had long being misunderstood and the campus had often seen them become victims of various acts of prejudice.

The University community was thus, in need of a center that would enhance understanding of Islamic traditions and culture. In recognition of and to fulfill this need, *Al-Madinah Cultural Center* was established in June of 1999; not only to provide a gathering place for students with common Islamic backgrounds, but also to contribute to the educational and cultural experience of the University by addressing the misconceptions about, and to increase awareness of Islam and its culture. Soon after Al-Madinah was founded, Coffman Memorial Union was closed for renovation. Even without a base in the Union, Al-Madinah used all possible means at its disposal to fulfill its mission of enhancing diversity and understanding on campus. Re-opening of Coffman Union in January 2003 finally provided Al-Madinah with the base that it needed, and it has since established itself as a prime resource on Islam and the Islamic culture or way of life on campus.

Mission

Al-Madinah seeks to “create a better understanding and appreciation for the diverse culture of Islam through educational, social, and community activities at the University of Minnesota.”

Vision

Al-Madinah’s vision is two-fold: seeking to serve both the Muslim minority on campus and the campus community at large. Al-Madinah aims to increase campus diversity and enhance the University experience through extensive programming designed to educate as well as entertain.

More concretely, short-term goals of Al-Madinah Cultural Center include expanding the literary library, retention and recruitment of new members to be involved in educational workshops, study circles and monthly involvement nights in order to reach out to members and non-members, expanding active participations among members and non-members and preparing them for competitive skills, continuing development of the official website, assisting the seven Al-Madinah affiliated organizations in establishing their groups, and increasing the visibility of Al-Madinah Cultural Center on and off campus.

Al-Madinah Cultural Center

Relationships with Organizations of Like Mission

Al-Madinah has always worked closely with many organizations sharing a common Islamic heritage, including the Muslim Students' Association, Malaysian Students Association (PERSISMA), Pakistani Student Association, Somali Student Association, Persian Student Organization of Minnesota, Oromia Student Union, and Turkish American Student Association. Al-Madinah has coordinated many activities with these affiliated groups and conducted constructive meetings to strengthen relationships between these organizations. This has resulted in a healthy partnership between these student groups. Al-Madinah has also reached out to members of other cultures by building relationships and collaborating with the various cultural centers and other student groups at the University, including La Raza Student Cultural Center, Asian-American Student Union, American Indian Student Cultural Center, Disabled Student Cultural Center, Queer Student Cultural Center, Black Student Union, Women's Student Activist Collective, Minnesota International Students Association, Navigators, as well as Minnesota Student Association (MSA) and Graduate and Professional Student Assembly (GAPSA). Al-Madinah has sought to build firm, friendly relationships with all of these groups through outreach, collaboration, and cooperation.

Need for Al-Madinah Cultural Center

The University of Minnesota's commitment to promoting diversity on campus has made possible the representation of many different cultures through University affiliated resource centers, departments, and various student organizations. Our campus houses well-developed programs for women's studies, Latin American studies, GLBT studies, African and African-American studies, Asian studies, American Indian studies, and Jewish studies, to name a few. Islam and Muslims, however, have long lacked a strong presence on campus, and misconceptions about Islam remain prevalent. In these times of global political turmoil, when the media perpetuates an unfairly negative image of Islam, many students remain misinformed and fall victim to the onslaught of anti-Islamic rhetoric.

Recent years have seen an increase in the international student population at the University, many of whom come from an Islamic background. Al-Madinah provides all such students with the resources necessary for a satisfactory college experience consistent with the customs and beliefs of their Islamic heritage. The last decade or so has also seen a sharp rise in the Somali population in the State of Minnesota, particularly in the Twin Cities metropolitan area. Having arrived here as refugees, many Somalis find themselves feeling like outsiders and perpetually "foreign." Al-Madinah aims to facilitate the integration of the Somali community into the greater campus community, establishing a mutually beneficial relationship between the two. Al-Madinah also serves this function of a "home away from home" for international students from all over the world.

Student Benefit Derived

All University students may benefit from services provided by Al-Madinah, regardless of whether or not they attend Al-Madinah events or even visit the Center. Al-Madinah's educational programs will increase diversity, tolerance, and understanding on campus, bringing greater unity to the campus community. However, Al-Madinah Cultural Center has shown commitment and importance of student services fees and resisted the trend of giving stipends to its officers as many other student organizations have opted to do. **Therefore, Al-Madinah's officers do not gain any monetary benefit from the services fees.** Students on the University campus are part of AMCC's general body and can get involved in any event from planning phase to execution stage.

Al-Madinah Cultural Center

Changes Implemented into the Proposal from Last Year's Fees Committee

Per last year's Fees committee's minor rationale:

- 1- Meeting minutes have been posted on the website for anyone to view.
- 2- A separate account has been made for a 10% operating reserve that will remain untouched throughout the year.

Fees Requested

Membership is open to the entire University of Minnesota student body, which has resulted in a highly diverse membership. Students are given an opportunity to participate in the organization based on their own levels of commitment and capacity, which range from being mere participants in events to active leaders in organizational affairs. The diversity of membership brings to the organization a unique set of perspectives and experiences that contribute to the mission of outreach and public service as set forth by the University.

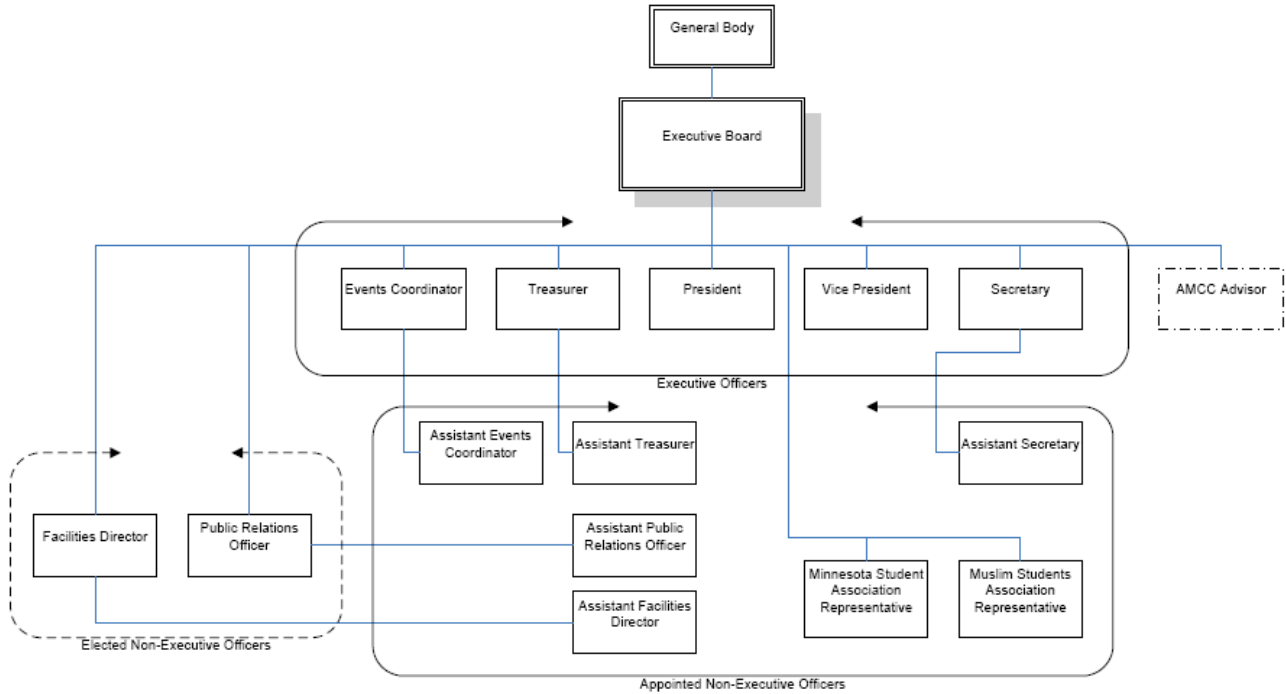
We are requesting \$63,000 from Student Services Fees for the term 2009-2010. This is a \$500 humble increase from last year's amount received. This increase is to accommodate the growing international community at the University of Minnesota and Al-Madinah's increasing member base.

Summer 2008 Operations

Al-Madinah Cultural Center will operate on 6% of the amount awarded by the Students Services Fees for summer 2008

Al-Madinah Cultural Center

Organizational Chart



Al-Madinah strives for professionalism. The Executive Board of Al-Madinah is composed of five members: President, Vice President, Treasurer, Secretary, and Events Coordinator. Non-executive positions include appointed and elected officers that also play a significant role in the organization. An efficient system of communication and coordination is established by a strong tradition of weekly board meetings where elected and appointed officers discuss, deliberate, and plan. Elections occur annually in the second semester, in which members of the general body are able to vote for their candidates for each executive position.

Al-Madinah Cultural Center**Performance Report**

Event and Description	-----Attendance-----		
	2007-2008 Actual	2008-2009 Actual/Est.	2009-2010 Estimated
1 Islam Awareness Week <i>Includes lectures, workshops, outdoor demonstrations, etc</i>	2000	2200	2400
2 Ramadan Iftars <i>Provides a place for students to break their fasts</i>	3,200	3300	3400
3 Fast-A-Thon <i>Get people who normally wouldn't fast to fast and arrange for donations for each person that fasts</i>	700	750	800
4 Eid Rageous <i>Celebration of Muslim holiday Eid-al-Fitr.</i>	350	375	400
5 Welcome Dinner <i>Event to kick-off the new academic year and to help freshmen learn about the organization</i>	450	500	550
6 Farewell Dinner <i>Event to end the year, bid farewell to graduating seniors and recognize their achievements</i>	500	525	550
7 Educational Workshops and Lectures <i>Educate people about of Islamic culture and civilization</i>	500	500	500
8 Al-Madinah Discussion Circles <i>Educational circles that specialize around current events or cultural topics</i>	300	325	350
9 Leadership Workshop <i>Grooming future leaders of AMCC, its affiliates, and the campus community</i>	30	30	30
10 Members' Involvement Nights <i>Monthly get-together to keep members involved and interested in the organization</i>	500	550	600
11 Mentorship Program <i>Working with Brian Coyle Center near the west bank and helping young students with their transition into higher education</i>	-	20	35
12 Sports Tournaments <i>Semester tournaments (basketball and soccer) that host the campus community to foster stronger relationships with other students and groups</i>	-	40	50
13 Charity Event <i>Collaborating with other student groups to raise money for those afflicted by current hardships</i>	-	250	300
14 Sister's Show <i>A talent show displaying unique performances of females from various cultural groups on campus</i>	400	450	500

Al-Madinah Cultural Center

Al-Madinah Cultural Center aims to provide services to the Muslim community at the University of Minnesota, and educate the campus community about Islamic culture and its diverse people by making its activities available to the campus community. Our programming has shown a steady rate of increase in attendance to the point where we have at times exhausted available capacities offered to us by University facilities. The numbers in our events have increased by nearly 10% alone in fall of 2008. Our membership has also significantly increased and diversified compared to last year.

To evaluate our performance, and to increase it, we also conduct evaluation surveys after some of our selected events; almost 90% of attendees have rated our events high on these surveys. Along with these surveys, we also accept comments and suggestions for improvements and take them into consideration when planning for a similar event. In addition, Al-Madinah holds general body meetings every other month for members and non-members to voice their opinions and give feedback/suggestions on past and future events.

Organizational Goals

Short-term goals for Al-Madinah Cultural Center include the retention and recruitment of new members to be involved in the educational workshops, study circles and monthly involvement nights in order to reach out to non-member students as well, expanding active participations among members and non-members and preparing them for competitive skills, continuing development of the Al-Madinah website, assisting the seven Al-Madinah affiliated organizations in establishing their groups and expanding them, and increasing the visibility of Al-Madinah Cultural Center on and off campus through fresh and exciting events.

Long-term goals include establishing Al-Madinah Cultural Center and its events as the central source of information for campus community regarding the various Muslim cultures. In addition, Al-Madinah aims to involve more local and international graduate students, educating the University's diverse community about Islamic culture, dispelling negative stereotypes surrounding its people, and developing a strong connection between other cultural groups on campus through collaboration of events.

Evaluation of Organizational Goals

Achievement of goals will be determined both objectively and subjectively. Objectively, it will be evaluated based on whether or not educational workshops are organized; whether the website is revamped to a superior quality; by observing trends in attendance at the center and events, by observing trends in membership and the size of the mailing list, by observing the level of involvement shown by members, etc. To evaluate its performance subjectively, Al-Madinah provides avenues for obtaining feedback through a suggestion box and through a survey distributed at the end of events. In addition, our advisors throughout the campus provide us with the critical analysis of our performance in each event.

This objective and subjective evaluation will be done by the Al-Madinah board, its members, its advisors, the people it serves, and everyone on the email list. Al-Madinah constantly encourages and solicits feedback. This feedback and evaluation results will be synthesized and documented in the form of a written report. The board of Al-Madinah will take appropriate measures then to adjust their policies and plans accordingly to better serve the organization and the campus community.

Al-Madinah Cultural Center

Description of Impact at a 10 Percent Reduction in Fees Request

The following are the effects of a 10 percent reduction in the amount requested that can be foreseen under the current circumstances:

1. In general:

- a. Al-Madinah Cultural Center has chosen to request almost the same amount as the amount rewarded last year. Our best efforts have been expended in justifying our expenses and making them as modest as possible. A reduction in the proposed amount would cause this organization to either contract or at the least continue to function at the same level; where the latter to us is another form of the former.
- b. The quality of events would not deteriorate, but their quantity would.
- c. Energy would shift from improving effectiveness of events towards fundraising.

2. In specific:

- a. While Al-Madinah does care greatly about the quantity of its programs, the real emphasis has always been on their *quality*. We aim to provide a quality service or no service at all. To maintain such high standards, the organization will prioritize its proposed programs based on urgency and practicality and will opt to cancel programs with the least priority that amount to 10% of the amount proposed.
- b. In this process, some programs that are quite vital to the organization in particular and the University community in general, such as community involvement activities, and educational workshops might be affected.

BUDGET			
Student Organization Name: <i>Al-Madinah Cultural Center</i>			
INCOME	ACTUAL 2007-2008	PROJECTED 2008-2009	REQUEST 2009-2010
Student Services Fees	\$ 57,592.29	\$ 62,500.00	\$ 63,000.00
Foundations	\$ -	\$ -	\$ -
Corporations	\$ -	\$ -	\$ -
Individual Contributions	\$ -	\$ -	\$ -
Fundraising Measures	\$ 2,000.00	\$ 1,000.00	\$ 1,000.00
In-Kind Support	\$ -	\$ -	\$ -
Investment Income	\$ -	\$ -	\$ -
Grants Internal to UM (i.e. Administrative, Coke)	\$ 5,000.00	\$ 3,000.00	\$ 3,000.00
Grants External to UM	\$ -	\$ -	\$ -
Operation Reserves (should be 10%)	\$ 5,759.23	\$ 6,250.00	\$ 6,300.00
Carry over from Previous year	\$ 5,000.00	\$ 3,251.52	\$ 5,501.52
Total Income	\$ 75,351.52	\$ 76,001.52	\$ 78,801.52
OPERATIONAL EXPENSES	ACTUAL 2007-2008	PROJECTED 2008-2009	REQUEST 2009-2010
Salaries, Wages, and Stipends	\$ -	\$ -	\$ -
Insurance, Benefits, Taxes	\$ 500.00	\$ 500.00	\$ 500.00
Consultants / Professional Fees	\$ 1,000.00	\$ 1,000.00	\$ 1,000.00
Travel	\$ -	\$ -	\$ -
Food	\$ 1,350.00	\$ 1,250.00	\$ 1,300.00
Equipment	\$ 2,500.00	\$ 3,000.00	\$ 3,200.00
Supplies	\$ 2,750.00	\$ 3,000.00	\$ 3,100.00
Printing and Copying	\$ 2,250.00	\$ 2,250.00	\$ 2,250.00
Telephone and Fax	\$ 500.00	\$ 500.00	\$ 500.00
Postage and Delivery	\$ 250.00	\$ 250.00	\$ 250.00
Rent and Utilities	\$ -	\$ -	\$ -
In-Kind Expenses	\$ -	\$ -	\$ -
Other (Continual Library/Student Resource Expansion)	\$ 2,000.00	\$ 2,000.00	\$ 2,000.00
Total Operational Expenses	\$ 13,100.00	\$ 13,750.00	\$ 14,100.00
PROGRAMMING EXPENSES*	ACTUAL 2007-2008	PROJECTED 2008-2009	REQUEST 2009-2010
Food	\$ 17,500.00	\$ 18,500.00	\$ 20,700.00
Room Rental	\$ 13,000.00	\$ 12,500.00	\$ 11,590.00
Advertising	\$ 9,500.00	\$ 8,000.00	\$ 6,950.00
Entertainment	\$ 7,500.00	\$ 7,000.00	\$ 8,900.00
Travel	\$ 4,500.00	\$ 3,750.00	\$ 4,100.00
Other	\$ 8,000.00	\$ 7,000.00	\$ 7,050.00
Total Programming Expenses	\$ 60,000.00	\$ 56,750.00	\$ 59,290.00
GRAND TOTAL EXPENSES	\$ 73,100.00	\$ 70,500.00	\$ 73,390.00
Difference (Income Less Expenses)	\$ 2,251.52	\$ 5,501.52	\$ 5,411.52
<p>* For the Programming/Project expenses, organizations must provide a breakdown of the programming/projects that comprise the total costs listed above. In turn, the sum of each programming/project's costs should add up to the totals listed for each item. The Programming/Project breakdown sheet is provided on the next page and should be duplicated for each individual program/project. Breaking down your organization's projects and supplementing with narrative pages could alleviate the need to compile this information for the fees committee at a later date.</p>			

PROGRAM BREAKDOWN 2009-2010

Student Org Name	Al-Madinah Cultural Center				
Name of Program	Islam Awareness Week				
Food	\$ 1,500.00				
Room Rental	\$ 2,000.00				
Advertising	\$ 1,250.00				
Entertainment	\$ 3,000.00				
Travel	\$ 1,800.00				
Other*	\$ 1,500.00				
Program Total:	\$11,050.00				

Narrative:
 Spring semester's flagship event sponsored by AMCC. A week long conference, that brings people of all walks of life together to understand the true culture and teachings of Islam in a welcoming environment. This week includes lectures, workshops, outdoor demonstrations, performance, and more. Open to the entire University community, this event is a huge success every year.

PROGRAM BREAKDOWN 2009-2010

Student Org Name	Al-Madinah Cultural Center				
Name of Program	Ramadan Iftars				
Food	\$ 7,000.00				
Room Rental	\$ 2,500.00				
Advertising	\$ 1,000.00				
Entertainment	\$ -				
Travel	\$ -				
Other*	\$ 1,500.00				
Program Total:	\$12,000.00				

Narrative:
 Largest event of the fall semester. With a large and diverse Muslim community on campus celebrating the Month of Ramadan (month of fasting), this event provides students an opportunity to come together and break their fast with their fellow brothers and sisters. This is an essential event for Muslims on campus and it is also open to the entire University student population.

PROGRAM BREAKDOWN 2009-2010

Student Org Name	Al-Madinah Cultural Center				
Name of Program	Fast-A-Thon				
Food	\$ 2,550.00				
Room Rental	\$ 750.00				
Advertising	\$ 1,000.00				
Entertainment	\$ 1,000.00				
Travel	\$ -				
Other*	\$ 750.00				
Program Total:	\$ 6,050.00				

Narrative:
 In the spirit of Ramadan, Fast-A-Thon is held every year on different campuses across the United States to highlight the struggles of poverty and hunger around the world. It brings the students together, educates them, and raises money for appropriate charities which fight hunger. This event raises awareness about hunger issues by inviting its participants to abstain from food and drink from sunrise to sunset.

PROGRAM BREAKDOWN 2009-2010

Student Org Name	Al-Madinah Cultural Center								
Name of Program	Eid Rageous								
Food	\$ 1,500.00								
Room Rental	\$ 650.00								
Advertising	\$ 500.00								
Entertainment	\$ 1,200.00								
Travel	\$ 500.00								
Other*	\$ 700.00								
Program Total:	\$ 5,050.00								

Narrative:
 This event is a celebration of a major festival for Muslims in the calendar year called Eid-al-Fitr. The event is joyous and engaging with fun games, live performances and great food from numerous different cultures.

PROGRAM BREAKDOWN 2009-2010

Student Org Name	Al-Madinah Cultural Center								
Name of Program	Welcome Dinner								
Food	\$ 1,000.00								
Room Rental	\$ 750.00								
Advertising	\$ 500.00								
Entertainment	\$ 500.00								
Travel	\$ 250.00								
Other*	\$ 500.00								
Program Total:	\$ 3,500.00								

Narrative:
 This event is held at the beginning of the academic year to welcome the new freshman to the University. This event serves as a orientation/introduction for new students to the University system, as well our organization.

PROGRAM BREAKDOWN 2009-2010

Student Org Name	Al-Madinah Cultural Center								
Name of Program	Farewell Dinner								
Food	\$ 2,000.00								
Room Rental	\$ 750.00								
Advertising	\$ 500.00								
Entertainment	\$ 500.00								
Travel	\$ 250.00								
Other*	\$ 500.00								
Program Total:	\$ 4,500.00								

Narrative:
 Similar to the Welcome Dinner, the Farewell Dinner is held at the end of the academic year to bid farewell to the graduating seniors and to recognize their achievements here at the University. Certificates and awards are given to those seniors who displayed leadership on campus throughout their academic career.

PROGRAM BREAKDOWN 2009-2010

Student Org Name	Al-Madinah Cultural Center				
Name of Program	Educational Workshops and Lectures				
Food	\$ 500.00				
Room Rental	\$ 300.00				
Advertising	\$ 500.00				
Entertainment	\$ 350.00				
Travel	\$ 500.00				
Other*	\$ 250.00				
Program Total:	\$ 2,400.00				
Narrative:					

These workshops are held at numerous times throughout the year on a variety of topics in order to educate people about other cultures, including Islamic culture and civilization. Workshop topics are chosen by popular demand. Lectures include bringing in prominent speakers to speak on any relevant issue on the minds of citizens all over the world.

PROGRAM BREAKDOWN 2009-2010

Student Org Name	Al-Madinah Cultural Center				
Name of Program	Discussion Circles				
Food	\$ 450.00				
Room Rental	\$ 250.00				
Advertising	\$ 500.00				
Entertainment	\$ -				
Travel	\$ -				
Other*	\$ 250.00				
Program Total:	\$ 1,450.00				
Narrative:					

These events are designed such that each circle/class builds upon the previous. The topics are more specific and discussions focus on student involvement. This event is open to everyone. Much of the discussions engage students to improve communication skills and help articulate thoughts better. Each circle is a safe place for people to share their thoughts and feelings knowing that the other participants will be respectful and attentive.

PROGRAM BREAKDOWN 2009-2010

Student Org Name	Al-Madinah Cultural Center				
Name of Program	Leadership Workshop				
Food	\$ 500.00				
Room Rental	\$ 500.00				
Advertising	\$ -				
Entertainment	\$ 250.00				
Travel	\$ 200.00				
Other*	\$ 250.00				
Program Total:	\$ 1,700.00				
Narrative:					

This event is held once a semester to groom the future leaders of Al-Madinah, its affiliates and many other campus organizations. The workshop has many engaging elements to motivate, inspire and educate students. Such elements include community-building activities, lectures by community leaders, and thought-provoking ideas presented by past leaders of Al-Madinah.

PROGRAM BREAKDOWN 2009-2010						
Student Org Name	Al-Madinah Cultural Center					
Name of Program	Members' Involvement Nights					
Food	\$ 1,500.00					
Room Rental	\$ 1,200.00					
Advertising	\$ 500.00					
Entertainment	\$ 750.00					
Travel	\$ -					
Other*	\$ 250.00					
Program Total:	\$ 4,200.00					
Narrative:						
<p>The Member's Involvement Nights are held Fridays a couple times a semester to provide a relaxing night with fellow students. This is another event that allows us to bring members back to the center and involved with its activities.</p>						
PROGRAM BREAKDOWN 2009-2010						
Student Org Name	Al-Madinah Cultural Center					
Name of Program	Mentorship Program					
Food	\$ 300.00					
Room Rental	\$ 250.00					
Advertising	\$ 50.00					
Entertainment	\$ 350.00					
Travel	\$ 100.00					
Other*	\$ 50.00					
Program Total:	\$ 1,100.00					
Narrative:						
<p>A new program started by Al-Madinah that helps University students work very closely with younger students at the Bryan Coyle Center, helping the youth transition to higher education. We help each individual student raise their grades and improve their communication skills for real-world situations such as interviews and new job opportunities.</p>						
PROGRAM BREAKDOWN 2009-2010						
Student Org Name	Al-Madinah Cultural Center					
Name of Program	Sports Tournament					
Food	\$ 200.00					
Room Rental	\$ 800.00					
Advertising	\$ 250.00					
Entertainment	\$ -					
Travel	\$ -					
Other*	\$ 200.00					
Program Total:	\$ 1,450.00					
Narrative:						
<p>Tournaments include soccer and basketball and are open to the entire campus community. Advertising is specifically done in other cultural groups to foster a stronger relationship with the second floor community.</p>						

PROGRAM BREAKDOWN 2009-2010						
Student Org Name	Al-Madinah Cultural Center					
Name of Program	Charity Event					
Food	\$	-				
Room Rental	\$	240.00				
Advertising	\$	200.00				
Entertainment	\$	1,000.00				
Travel	\$	500.00				
Other*	\$	100.00				
Program Total:	\$	2,040.00				
Narrative:						
<p>An annual charity event used to fundraise for those in need. All proceeds would go directly to charity. This year's theme addresses the humanitarian crisis in Gaza, in which the charity raised would go to those families in dire need while also educating the campus community about the history of the Palestine/Israel conflict and what they can do to help raise awareness.</p>						
PROGRAM BREAKDOWN 2009-2010						
Student Org Name	Al-Madinah Cultural Center					
Name of Program	Sister's Show					
Food	\$	1,700.00				
Room Rental	\$	650.00				
Advertising	\$	200.00				
Entertainment	\$	-				
Travel	\$	-				
Other*	\$	250.00				
Program Total:	\$	2,800.00				
Narrative:						
<p>An annual sisters-only talent show that allows Muslim and non-Muslim women to go on stage to perform cultural performances, including dancing, singing, poetry, comedy and more. Many Muslim women who choose to cover themselves feel comfortable at the event as they do not have to worry about the opposite gender being there. This is an event that allows women to enjoy their company and to have fun with all their companions.</p>						