

The Impact Movement

**The Impact Movement
University of Minnesota Twin Cities**

January 23rd, 2009

Fees Request for 2009-2010 Academic Year

Address

Coffman Memorial Union #126, 300 Washington Ave SE Minneapolis, MN 55455

Phone

262-930-9262

Fax

N/A

Email

aomega@umn.edu

Colas002@umn.edu

“We acknowledge that the fees committee does not award actual dollars, but rather a penny fee that earns dollars based upon student enrollment levels. Any differences between anticipated and actual income resulting from changes in enrollment are the responsibility of the student organization, not of the fees committee.”

Joshua Colas

Frederick Biney

Preparer’s Name Here

Co-Preparer’s Name Here

Is your organization an IRS 501 (c)(3) not-for-profit? Yes _____ No X _____
If yes, please provide proof of your organization’s 501(c)(3) status.

Funds are being requested for (check all that apply):

General Operating Support X Start-Up Costs _____ Capital _____
Project / Program Support X Technical Assistance _____ Other (List) _____

Budget

Dollar Amount Requested \$ 7000
Total Annual Organization Budget \$ 25,395
Total Project Budget (Apart from General Operating) \$ 15,725

The Impact Movement

Narrative

Please use the following guidelines to provide a description of your organization:

- **Brief summary of organization history, including date of establishment**

The Impact Movement is an inter-denominational Christian group, which is stationed on college campuses throughout the nation, with a few international chapters and members. Since our founding by Tom Fritz in 1991 as a National conference, Impact has become a rallying point for African American college students, high school students, and career professionals. Therefore, we use the Impact National Conference to build momentum, train, and give newcomers a venue to join us.

Impact is now a movement reaching thousands of African American college students, shifting from just being a conference to a fully operational organization to encompass the mission and vision of Impact. We have a presence on more than 100 college campuses in the U.S. and Africa, with 53 full-time staff members and fellows, and more than 14,000 students have participated in the National Conference since 1991.

Our Local chapter has been in operation since 1998. Lorna Johnson who serves as a Regional Coach for Impact, was our local coach until 2004. After her departure to the national Headquarters in Florida, the University of Minnesota Twin Cities has been a student-led, student-managed organization with direction and support from our Regional coaches from a distance.

- **Organization mission / vision statements, inclusive of organizational goals**

The mission of the Impact Movement prioritizes the development of students who are well-equipped, meaning they are spiritually focused, financially responsible and morally fit, and able to share the truths of the Christian faith to their peers and members of the community at large.

Impact is centered on the spiritual care of young adults of the African Diaspora primarily on college campuses, where students are presented with the opportunity to learn about Jesus and how God wants to help them maximize their fullest potential through establishing and continuing a personal relationship. We are open to all students, as our national headquarters has full-time staff who are of different cultures as well such as Caucasian, Asian, and Hispanic American.

Whether through our weekly meetings, Soul II Soul gatherings, or through casual conversations we engage Non-Christians and Christians alike in meaningful and fruitful conversations about spirituality, religion, and culture where different viewpoints and beliefs are respected and allowed to flow freely. For Non-Christians, we offer the option for them to begin a personal relationship of Jesus Christ and for the Christians we will assist them in their spiritual development primarily through Soul II Soul, Men's & Women's Bible Studies, Community Outreach Initiatives, conferences, retreats, and summer projects.

The Impact Movement

- **Describe your organization's relationship with organizations of like mission**

The Impact Movement Minnesota Chapter has a strong relationship with Cru. The Impact Movement is affiliated with Campus Crusade for Christ but in separate organizations. Impact movement is a group for African-Americans while Cru is for all groups of people. We feel that it is essential to build bonds with other faith based organizations because every group helps each other grow through partnerships in projects and activities.

- **Illustrate the need for your organization within the university community, inclusive of how your organization meets this need**

College is often described as a time where one is introduced to many new things that will affect them as a student and their life, of those things religion is a major one. As students continue in their own religious beliefs or search for new ones, Impact will be the group that serves as a safe group for Christians that are looking to be welcomed and increasing their faith. Impact knows the importance of being a part of the Christian community and helping U of M Christians succeed. In order to accomplish this, Impact allows students to participate in outreach that will help other students.

Impact also hosts game nights to allow students to have safe and free fun activities during the evenings instead of going to parties or clubs where students could encounter alcohol. The University of Minnesota admissions has also expressed a great need to enroll more multicultural students and increase its retention rates of multicultural groups. The Impact group expresses African-American culture which has brought together not only African-Americans but many other races to convene together. This group allows African-Americans to bond with each other and find a place with peers of similar culture, thus creating a warm and welcoming environment that will continually invite multiracial students to come and stay.

- **Detail the student benefit derived from your organization, whether or not students utilize services**

The Impact Movement benefits students on campus because we exist to serve, work in cooperation with, and in support of the programs that exist for college campus students to enhance their spiritual awareness. We also have activities that allow for national networks of those engaged in youth and young adult ministry. The university community will benefit as the activities of this group are geared towards promoting a well-rounded education where all students are concerned. We do not intend to force our religious beliefs on to students but we will like to present them with the option to accept Christianity as their religion or to just for them to have someone impacting their life that is a Christian. We are aware and respect the fact that there will be students who do not share the same beliefs as us about Christianity. We have various events throughout the year that reach out to all students regardless of their religion; we hold

The Impact Movement

Bible studies twice a week in Yudof Hall (one day for women and another day for men), and have Soul II Soul every week at Coffman Memorial Union.

- **Describe student involvement within your organization**

Over the past year the Impact Movement has exceeded beyond our own expectations with student involvement. We started off the fall 2007 semester with only seven members attending our Soul II Soul sessions on Thursday nights and opened the spring 2008 semester with over 170 members fellowshipping with us on Thursday night. Also we have gained over 60 new members as of fall 2008. The involvement at the men and women's bible study sessions are increasing each week. Men bible study averages about 7 men each week and women's average about 10 women each week. Remembering Our Spiritual Heritage (R.O.S.H), an event that we host in February, engaged about 20 volunteers and ministered to over 150 students and guest. At the end of March we host our benefit concert, March Madness. The March Madness concert was a successful event with the help of over 20 volunteers and over 225 attendees. We have a broad team of 6 members that gather once a week to finalize the weekly agenda. They orchestrate the bible studies, Soul II Soul meetings, and all other events. As a whole the Impact Movement is devoted to finding ways for students to become involved with Impact and the community. We arrange an outreach week during the academic school year, during this week we reach out to the students that want to be involved with Impact by hosting different events throughout the week.

- **State the total amount of your student services fees request. Indicate whether this amount is a decrease from last year, an increase from last year, or if this is a first-time request.**

For the 2009-2010 academic year this will be our first attempt at requesting funds from the Student Service Fees. We are asking for ___\$7000___. A large portion of these funds will be going towards Impact hosting free campus wide events that are open to University of Minnesota students. A large portion will also be going towards training materials and leadership programs for students. Other grants that we annually apply for and have received are the Coca-Cola and TCF Grant.

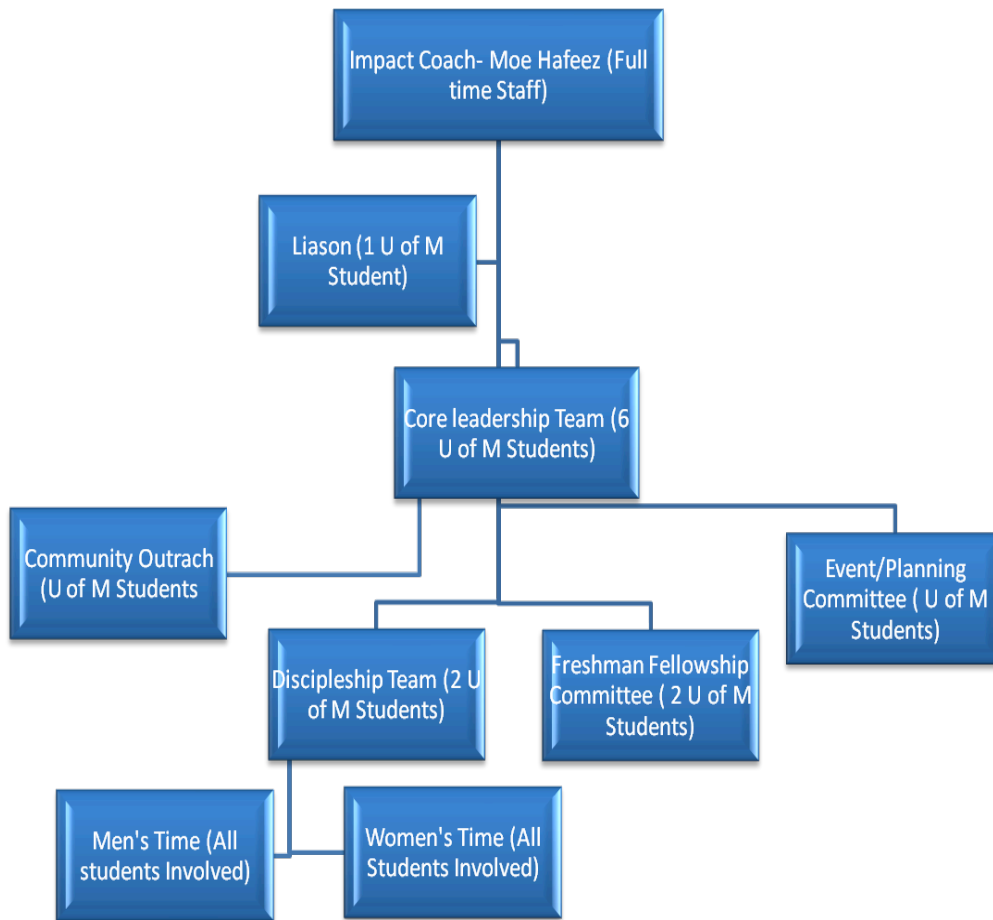
- **Indicate at what percentage your organization will operate in the summer of 2009**

During the summer about 15-20% of Impact students remain active at the University of Minnesota. Another 10-15% of students get involved with Summer Impact Missions Projects across the U.S. and South Africa.

The Impact Movement

Organizational Chart

Provide a block diagram that details more clearly your organization structure. The organizational chart should provide a clear picture of the reporting structure and student involvement.



The Impact Movement

Performance Report

Use quantitative measures to indicate participation in services and programs within your organization. Figures should be used to demonstrate the impact your organization has on campus life:

- Number of events
 - 37
- Participation / Attendance figures
 - Soul II Soul
 - Fall Retreat
 - Game Nights
 - Regional Conferences
 - Student Connections (3)
 - Applebees
 - Village Wok
 - Gopher After Dark
 - ROSH
 - March Madness
 - ILI
 - Movie Nights
 - Community Outreach
- Survey results or other methods of evaluation
 - 247 Black Students
 - 273 surveys

The Impact Movement

Please report figures for the previous, current, and requested fiscal years.

Use qualitative measures to depict the evaluative actions of your organization:

- Describe your criteria for success. What does your organization hope to accomplish as a result of its activities?

One of the main ways we evaluate our success is by looking at our progress over the years. In the 2006 – 2007 academic year our local chapter was in danger of being shut down for not complying with our national standards, due to lack of communication with the National office.

Upon re-connecting with our Regional Coach Lorna Johnson we instructed that we were in essence re-launching the chapter, to get back to the basics of what we stand for. From that standpoint we started off with small numbers in the 2007 – 2008 academic year with our Soul II Soul gatherings, and a few leaders to the fall retreat. Since we attended the Regional conference Martin Luther King Jr. Weekend for the 2007 – 2008 academic year, our numbers have grown at Soul II Soul, and more students have been wanting to get involved.

For us we view if we are able to consistently host Soul II Souls, Men's and Women's Time, community outreach events, and as we get students to be faithful to these things, we realize we will be able to progress in soon our efforts will be sustainable. We are getting more freshman involved which will allow the organization to refresh itself year after year, as the baton of what we are truly about is passed down.

We hope to accomplish for U of M Christians a more definite and personal relationship with Jesus Christ. This also means exploring in depth what Christianity is truly about, that will increase their faith in Jesus. For our new Christians or those exploring religion we want to teach them the fundamentals of Christianity. We want to welcome them to explore Christianity and see how it can apply to their lives. Overall, we want everyone to build a strong Christian foundation that will go on with them as a student and adult lives.

Our short term goals for success at the University of Minnesota are to provide open and free environments for students to express themselves. We then give students a history on our organization and allow them an opportunity to get involved. Our motives for getting students involved are to help train them to become future leaders on campus and in the community.

Our long term goals are to be a strong foundational organization that helps students to become more morally fit, financially free, and examine Christianity and grow within their spiritual walk. We also send students of faith, integrity and stewardship across the U.S. and South Africa that are willing to share their faith with individuals and allow them the opportunity to have a personal relationship with Jesus Christ.

The Impact Movement

- **How will your organization determine whether or not its goals have been met?**
 - Meeting its goals-increase student growth by 33%
 - Get in contact with 200+ freshman
 - College survey's- a diverse answer of college student
 - Participation, thoughts on event (+ or -)

With the events we host throughout the year we give the students college surveys. With them we can know not only what was good about the event but how we can make it better for the future. The students' opinion is important for this is a program in where we are here to help them not only with their spiritual walk but also to help them grow into leaders. As we progress throughout the year, we will continue to invite people (believers and non-believers) to let them know that this program is for them but we will still continue to hold on to our mission.

- **Who will be involved in evaluating your organization?**
- **What will be done with any collected evaluation results?**

The Soul-to-Soul attendees, Impact regional coaches, and the Leadership team do evaluations. We distribute follow-up cards to the students and visitors that attend the Impact Soul-to-Soul events on Thursday nights. These cards allow the opportunity for the attendees to note what they want done within the organization and/or whom they want to communicate with on a personal level. Our Impact regional coaches evaluate the organization either electronically or in person.

Through the internet, we have meetings with our coaches on Skype. Our coaches would analyze us on performance and effectiveness towards our attendees. The coaches generally would offer advice to improve the skills of the Leadership team. Once or twice a semester the Impact regional coaches visit University of Minnesota to evaluate the organization in person. They are able to see first-hand the performance level of the organization. The Leadership team is then able to connect with the coaches by elaborating on the organization's planning and success for the semester. We also distribute surveys that comply with the organization. The Leadership team sends surveys to the National Head quarters of Impact Movement.

The evaluations, once collected, are review with the Leadership team. The Leadership team then discusses on altering and adding to the objective and performance of the organization in accordance to the evaluations received. These evaluations are also sent to the National Head quarters of the Impact Movement in Orlando, Florida.

The Impact Movement

Description of Impact at a 10 Percent Reduction in Fees Request

Please describe how your organization would function should the fees committee reduce your fees request by 10 percent. What would be most greatly affected? Please provide specifics, including how a 10 percent reduction would change the dollar amounts as outlined in your 2009-2010 expenses on the next page.

Our budget for the Impact group comes mainly from the University and grants from TCF Bank and Coca Cola. The grants received in 2008 totaled \$2500. If our budget was reduced by 10% then our organization would not be able to offer some of the crucial elements of Impact to our members. For example our Impact National Conference increased in price significantly from 2007 to 2008, which is now \$325. Due to this increase, many students were not able to attend including leaders after much fundraising. If there is a reduction there will be less aid available to students.

Impact also hosts many events geared towards all students on campus. Events like ROSH and March Madness are held in Coffman's The Whole and auditoriums on the St. Paul campus. These locations allow us to reach out to students on both campuses about who we are and invite them to fellowship with other students. To reserve these rooms approximately \$400 was spent not including \$300-\$400 more on food to have students and leaders build relationships during and after events. We also purchased bus tickets and gas to have performers from all parts of the U.S. to participate.

Impact leaders also require leadership and training manuals, and proper material to insure our mission is being effectively fulfilled for all members. Without these materials it would be difficult to plan and highlight the goals of our meetings and Impact. In our meetings we also provide pizza, snacks, and drinks to attract new members to attend and learn about impact as well as discuss their viewpoints. So far our membership has increased by 37.5% which is 60 new members.

BUDGET			
Complete the sections below, as it applies to your organization Shaded sections are formulas and should not be changed			
Student Organization Name:			
INCOME	ACTUAL	PROJECTED	REQUEST
	2007-2008	2008-2009	2009-2010
Student Services Fees	\$ -	\$ -	\$ 7,000.00
Foundations	\$ -	\$ -	\$ -
Corporations	\$ -	\$ -	\$ -
Individual Contributions	\$ 2,000.00	\$ 250.00	\$ 1,000.00
Fundraising Measures	\$ -	\$ 5,000.00	\$ 7,000.00
In-Kind Support	\$ -	\$ -	\$ 15,000.00
Investment Income	\$ -	\$ -	\$ -
Grants Internal to UM (i.e. Administrative, Coke)	\$ 2,000.00	\$ 2,575.00	\$ 3,000.00
Grants External to UM	\$ -	\$ -	\$ -
Operation Reserves (should be 10%)	\$ -	\$ -	\$ -
Equipment Reserves (if applicable to your organization)	\$ -	\$ -	\$ -
Long Range Planning Reserves (if applicable to your organization)	\$ -	\$ -	\$ -
Carry over from Previous year	\$ -	\$ -	\$ 1,000.00
Total Income	\$ 4,000.00	\$ 7,825.00	\$ 34,000.00
OPERATIONAL EXPENSES	ACTUAL	PROJECTED	REQUEST
	2007-2008	2008-2009	2009-2010
Salaries, Wages, and Stipends	\$ -	\$ -	\$ -
Insurance, Benefits, Taxes	\$ -	\$ -	\$ -
Consultants / Professional Fees	\$ -	\$ -	\$ -
Travel	\$ -	\$ -	\$ -
Equipment	\$ -	\$ -	\$ 1,500.00
Supplies	\$ -	\$ -	\$ -
Printing and Copying	\$ -	\$ -	\$ 300.00
Telephone and Fax	\$ -	\$ -	\$ -
Postage and Delivery	\$ -	\$ -	\$ 500.00
Rent and Utilities	\$ -	\$ -	\$ -
In-Kind Expenses	\$ -	\$ -	\$ 7,000.00
Training Circullum	\$ -	\$ -	\$ 370.00
Other (Specify)	\$ -	\$ -	\$ -
Total Operational Expenses	\$ -	\$ -	\$ 9,670.00
PROGRAMMING EXPENSES*	ACTUAL	PROJECTED	REQUEST
	2007-2008	2008-2009	2009-2010
Food	\$ -	\$ -	\$ 2,000.00
Room Rental	\$ -	\$ -	\$ 2,000.00
Advertising	\$ -	\$ -	\$ 725.00
Entertainment	\$ -	\$ -	\$ 3,000.00
Travel	\$ 4,000.00	\$ 5,000.00	\$ 5,000.00
Speaker	\$ -	\$ -	\$ -
Other	\$ -	\$ -	\$ 3,000.00
Total Programming Expenses	\$ 4,000.00	\$ 5,000.00	\$ 15,725.00
GRAND TOTAL EXPENSES	\$ 4,000.00	\$ 5,000.00	\$ 25,395.00
Difference (Income Less Expenses)	\$ -	\$ 2,825.00	\$ 8,605.00
<p>* For the Programming/Project expenses, organizations must provide a breakdown of the programming/projects that comprise the total costs listed above. In turn, the sum of each programming/project's costs should add up to the totals listed for each item. The Programming/Project breakdown sheet is provided on the next page and should be duplicated for each individual program/project. Breaking down your organization's projects and supplementing with narrative pages could alleviate the need to compile this information for the fees committee at a later date.</p>			

Program/Project Breakdown Budget			
Impact Movement			
Name of Program: Re-Grand Opening			
Program Total:			
Narrative: The event is open to all U of M students, faculty, and the public. Because it does take place at the beginning of the school year, it is a great way for new students to connect with peers, and student leaders on the U of M campus. New comers and active participants will enjoy free food and games; they will also receive more information on future Impact events including volunteer opportunities, Bible study, Soul II Soul, movie nights, and other great events that will be taking place throughout the semester. This event takes place at Coffman Union, which is a prime central location on the University of MN Twin Cities campus. Because of this central location, we hope welcome many students from all ethnic backgrounds. Our hope is that students will connect, learn, and be inspired to join our open community with in the University of MN network.			
Food -			
Room Rental			
Advertising -			
Entertainment -			
Travel -			
Other -			
Program/Project Breakdown Budget			
Impact Movement			
Name of Program: Barbeque			
Program Total:			
Narrative: The Barbeque is our next biggest event of the semester. This event is held on one of the first weekends of the year. It is a time for those w			
Food -			
Room Rental			
Advertising -			
Entertainment -			
Travel -			
Other -			
Program/Project Breakdown Budget			
Impact Movement			
Name of Program: Student Connections			
Program Total:			
Narrative: This group is geared towards students who want to become a little more involved with the Impact community. The objective of these events			
Food -			
Room Rental			
Advertising -			
Entertainment -			
Travel -			
Other -			
Program/Project Breakdown Budget			
Impact Movement			
Name of Program: Soul II Soul			
Program Total:			
Every Thursday during the semester, Impact hosts a bible study called Soul 2 Soul. In Soul 2 Soul we invite believers and non-believers to come in and			
Food -			
Room Rental			
Advertising -			
Entertainment -			
Travel -			
Other -			
Program/Project Breakdown Budget			
Impact Movement			
Name of Program: Fall Retreat			
Program Total:			
Narrative: The Fall Retreat is a three day gathering that is geared towards upperclassmen that are selected by the Impact core team to help lead serv			
Food -			
Room Rental			
Advertising -			
Entertainment -			
Travel -			
Other -			
Program/Project Breakdown Budget			

Impact Movement				
Name of Program: Impact Winter Conferences				
Program Total:				
Narrative: Impact Winter Conferences provide students with an enriching, life-altering, empowering experience. National Conferences are held for 5				
Food -				
Room Rental				
Advertising -				
Entertainment -				
Travel -				
Other -				
Program/Project Breakdown Budget				
Impact Movement				
Name of Program: R.O.S.H				
Program Total:				
Narrative: Each year the Impact Movement host an event called Remembering Our Spiritual Heritage also known as ROSH. In previous years we hav				
Food -				
Room Rental				
Advertising -				
Entertainment -				
Travel -				
Other -				
Program/Project Breakdown Budget				
Impact Movement				
Name of Program: March Madness				
Program Total: During the month of March we host a benefit concert called March Madness. We choose an organization that we will like to make a do				
Narrative:				
Food -				
Room Rental				
Advertising -				
Entertainment -				
Travel -				
Other -				
Program/Project Breakdown Budget				
Impact Movement				
Name of Program: Impact Leadership Institue				
Program Total:				
Narrative: ILI's is an annual Leadership conference that takes place April 4th-6th on various campuses located in the Midwest Region. The conferenc				
Food -				
Room Rental				
Advertising -				
Entertainment -				
Travel -				
Other -				
Program/Project Breakdown Budget				
Impact Movement				
Name of Program: Awards Night				
Program Total: Throughout the school year Impact members commit to various tasks to keep the Impact Movement prospering on the University of M				
Narrative:				
Food -				
Room Rental				
Advertising -				
Entertainment -				
Travel -				
Other -				
Program/Project Breakdown Budget				
Impact Movement				
Name of Program: Men's Time				
Program Total:				
Narrative: "Men's Time" is a weekly gathering geared towards men around campus. This organized gathering is headed by student members of Impa				
Food -				
Room Rental				
Advertising -				
Entertainment -				
Travel -				
Other -				
Program/Project Breakdown Budget				
Impact Movement				
Name of Program: Women's Time				

<p>Program Total: Narrative: Once a week Impact host's a women's bible study. Women's bible study is a time that we provide training for women all over campus that want to learn more about their Christian faith and how to share it with other non-Christians. Also it is a time for women to come together to worship Christ, share, and relate to each other's experiences about being Christians while being students on a college campus. We will like to provide books/pamphlets that will encourage and teach the women on sharing their faith in Christ with others. We will watch videos that will depict women that are true believers in Christ sharing their faith. There will also be videos about biblical teachings and lessons. We will need to purchase the teaching materials, as well. The teaching material will consist of instructor books, folders/binders, and dry erase markers.</p>			
<p>Food - Room Rental Advertising - Entertainment - Travel - Other -</p>			
Program/Project Breakdown Budget			
<p>Impact Movement</p>			
<p>Name of Program: Summer Project</p>			
<p>Program Total:</p>			
<p>Narrative: Every year, Impact does a summer missions project that partner with different organizations (Campus Crusade, Kids Across America...) to</p>			
<p>Food - Room Rental Advertising - Entertainment - Travel - Other -</p>			

days and Regional Conferences are held for 3-days. Impact conferences provide students with workshops, seminars, and student connection times												
e had entertainment such as plays, music, dance, and guest speakers. Our goal for this event is to display Christianity from a cultural prospective.												
nation to on behalf the University of Minnesota's Impact Chapter. Prior to the concert we promote the charity aspect of our conference and accept												
e speakers consist of all the Midwest Region Impact Coaches, who conduct several seminars that help equip students for leadership. The semina												
innesota's campus. In an effort to honor our members for their hard work and dedication throughout the year, we have decided to allocate funds for												
ct. Our participants search for ways to invite all men on campus to our gatherings. These gatherings point toward empowering men academically,												

which all attendees to learn from both the presenters and peers on a wide-range of topics from financial accountability, personal relationships, tim												
We invite students to come and join us in celebrating what is to be a Christian from our different cultural backgrounds. In order for ROSH to be a st												
all donations up until the end of the concert when we announce our total. During the March Madness concert we have guest from all over the Midw												
s bring awareness to the roles of a leader, the different types of leaders and how to become an effective leader. This conference also takes a day												
a special awards ceremony at the end of the academic school year. The ceremony will include guest speakers who have been impacted by Impac												
emotionally and socially through open conversations. The free and open environment allows students to express their thoughts about personal iss												

2008-2009 Student Organization Student Services Fees Request
University of Minnesota - Twin Cities

the talents that they have and learn how they can do ministry with their talents. There are 4 mission projects: Impact K.A.M.P, Impact Summer Mu												

2008-2009 Student Organization Student Services Fees Request
University of Minnesota - Twin Cities

sic Project, Impact Orlando Summer Internship and Impact: Cape Town, South Africa. Our Chapter will help with the Sponsorship Letters and Mailin												

Overall students develop their leadership skills, and are further equipped to serve within in the local organization.													
Is to provide food and beverages for our guest.													
g a meal.													
of a great impact to students, because they now have a better understanding of the leader inside of them. Students need to pay for transportation													
behalf of the Impact Movement to show our gratitude for our members.													
ication and leadership skills. New attendees are allowed to receive further information about getting involved in a Bible study.													

